

## *What has DeNDRoN done for us?*

Vaughan Pearce

## *Research Nurse*

- Recruitment
- Opportunistic identification
- Time saving
  - discussion
  - selection
  - consent
  - blood samples

## *Research Nurse*

- Enrolment( PDMed- 1.5 hrs)
- Follow up ( PDMed 4-5 per week)
- Retain relationship with patient as part of the team.

## *Research Nurse*

- Development opportunity
- Time to collaborate with other investigators and centres
- Identify new studies and help with set-up work
- Wide geographical access to patients(Axminster, Seaton, Sidmouth, Honiton, Exmouth)

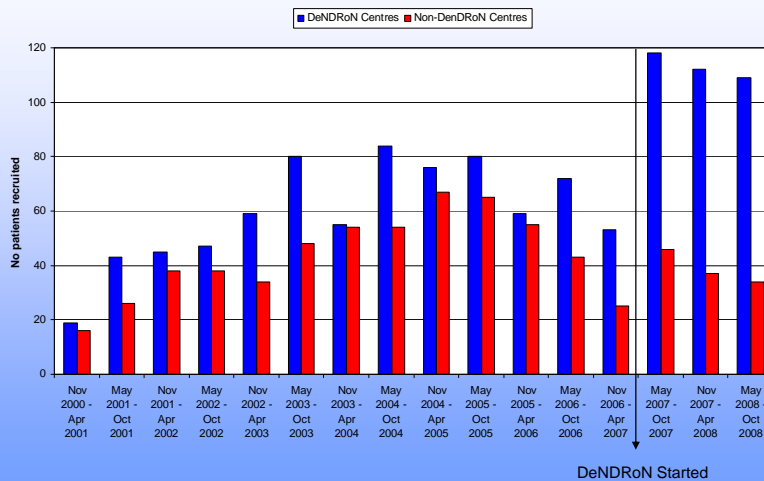
Recruitment to Get Up by centre

Site	Plymouth	RD&E	Torbay	NDDH	Torbay Care Trust	Patient Support Groups	GP
Number referred	9	72	38	43	15		54
Number recruited	7	44	27	14	4	20	13

## *Research Nurse*

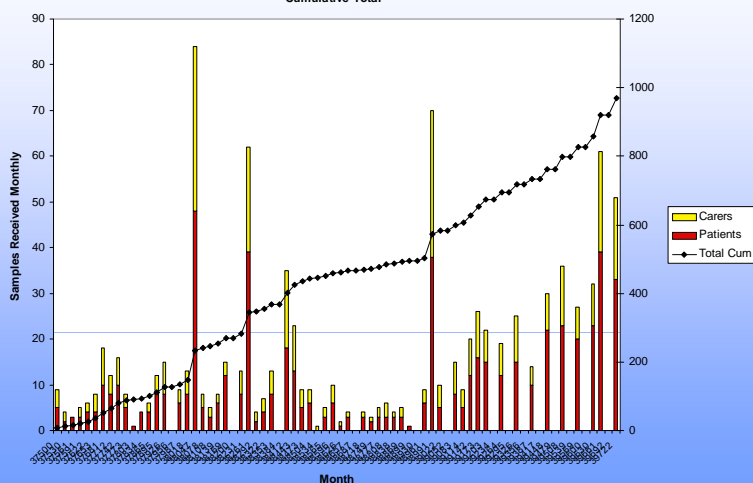
- Point of contact for patients with questions
- Time to spend with patients
- Maintain site files
- Ensure GCP training up to date
- Liason across specialty teams

PD MED Recruitment split by DeNDRoN Network Coverage



DeNDRoN Started

Monthly and Cumulative Total of Samples in PD GEN (Up to 28-Nov-2008)



## *Issues*

- Maintaining Clinician/Patient relationship to ensure participation
- Minimise administration work for DeNDRoN funded staff-  
accountability/productivity balance

## *Issues*

- Commercial studies can be poorly designed-involve clinicians early
- Research and job planning
- Learn from PD Med
- NHS is correct home for clinical research